

SS32A THRU SS310A

SURFACE MOUNT SCHOTTKY BARRIER RECTIFIER
 VOLTAGE RANGE 20 to 100 Volts CURRENT 3.0 Ampere

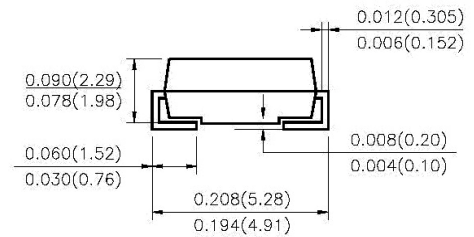
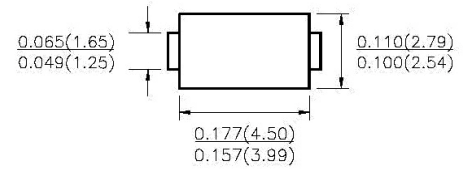
FEATURES

- ◆ Low profile surface mount package
- ◆ Built-in strain relief
- ◆ High switching speed
- ◆ Low voltage drop, high efficiency
- ◆ For use in low voltage high frequency inverters
- ◆ Free willing, and polarity protection applications
- ◆ Guarding for over voltage protection

Mechanical Data

- ◆ Case: Transfer molded plastic
- ◆ Epoxy: UL 94V-0 rate flame retardant
- ◆ Lead: Solder plated, solderable per MIL-STD-750 method 2026
- ◆ Polarity: Color band denotes cathode end
- ◆ Weight: 0.002 ounce, 0.064 gram

DO-214AC (SMA)



Dimensions in inches and (millimeters)

MAXIMUM RATINGS AND ELECTRICAL CHARACTERISTICS

Rating at 25°C ambient temperature unless otherwise specified.

Single phase, half wave, 60Hz, resistive or inductive load. For capacitive load, derate current by 20%

PARAMETER	SYMBOLS	SS 32A	SS 33A	SS 34A	SS 35A	SS 36A	SS 38A	SS 39A	SS 310A	UNIT
Maximum Repetitive Peak Reverse Voltage	V_{RRM}	20	30	40	50	60	80	90	100	Volts
Maximum RMS Voltage	V_{RMS}	14	21	28	35	42	56	63	70	Volts
Maximum DC Blocking Voltage	V_{DC}	20	30	40	50	60	80	90	100	Volts
Maximum Average Forward Rectified Current at TL see figure 1 $T_L=105^{\circ}C$	$I_{(AV)}$	3.0								Amps
Peak Forward Surge Current 8.3ms single half sine-wave superimposed on rated load (JEDEC method)	I_{FSM}	80								Amps
Maximum Instantaneous Forward Voltage @ 3.0A(Note1)	V_F	0.55			0.70		0.85			Volts
Maximum DC Reverse Current at rated DC Blocking Voltage per element	$T_A = 25^{\circ}C$	0.5								mA
	$T_A = 100^{\circ}C$	20.0				10.0				
Typical Thermal Resistance (Note 2)	$R_{\theta JA}$	55								$^{\circ}C/W$
	$R_{\theta JL}$	12								
Operating Junction Temperature	T_J	-55 to +150				-55 to +150				$^{\circ}C$
Storage Temperature Range	T_{STG}	-55 to +150								$^{\circ}C$

Note: 1. Pulse test: 300µs pulse width, 1% duty cycle

2. PCB mounted with 0.2×0.2" (5.0 × 5.0mm) copper pads

SS32A THRU SS310A

SURFACE MOUNT SCHOTTKY BARRIER RECTIFIER
 VOLTAGE RANGE 20 to 100 Volts CURRENT 3.0 Ampere

RATING AND CHARACTERISTIC CURVES SS32A THRU SS310A

FIG.1-TYPICAL FORWARD CURRENT DERATING CURVE

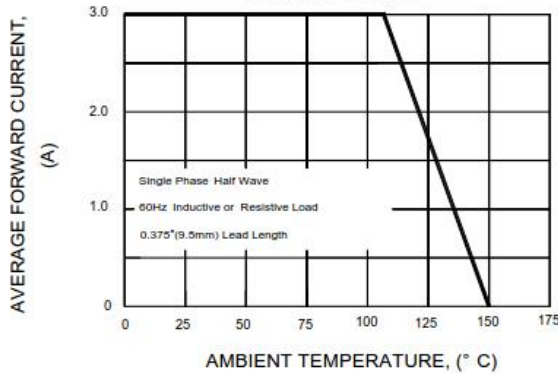


FIG.2-MAXIMUM NON-REPETITIVE PEAK FORWARD SURGE CURRENT

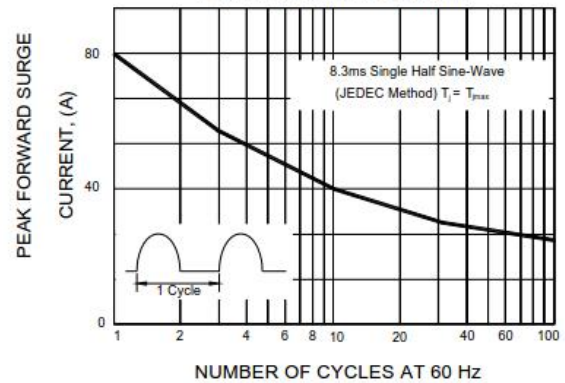


FIG.3-TYPICAL INSTANTANEOUS FORWARD CHARACTERISTICS

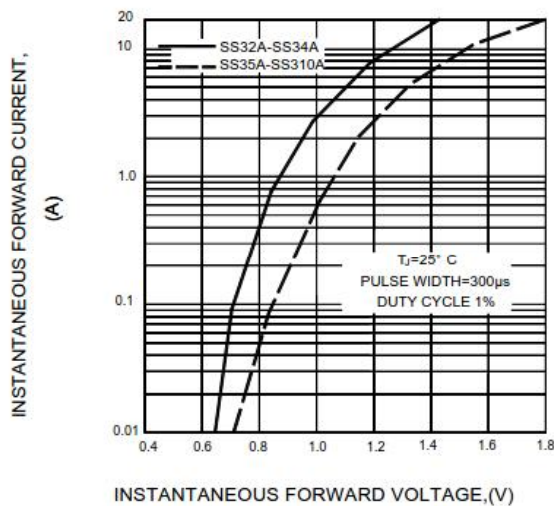


FIG.4-TYPICAL REVERSE CHARACTERISTICS

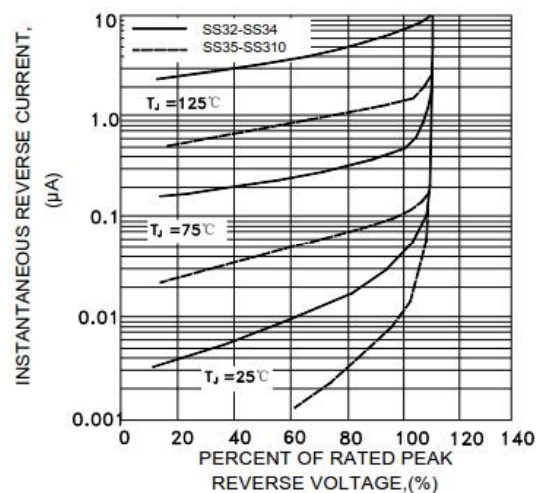
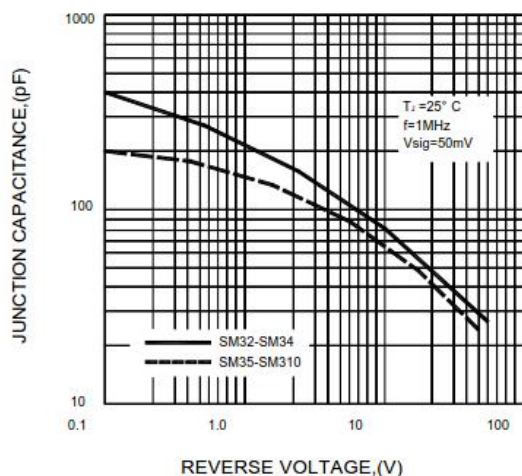


FIG.5-TYPICAL JUNCTION CAPACITANCE



Note: Specifications are subject to change without notice. For more detail and update, please visit our website.